



GLOBAL VILLAGE
HAWAII

CAMBRIDGE YLE & TLE PROGRAMS 2026

Recommended Ages: 6-17

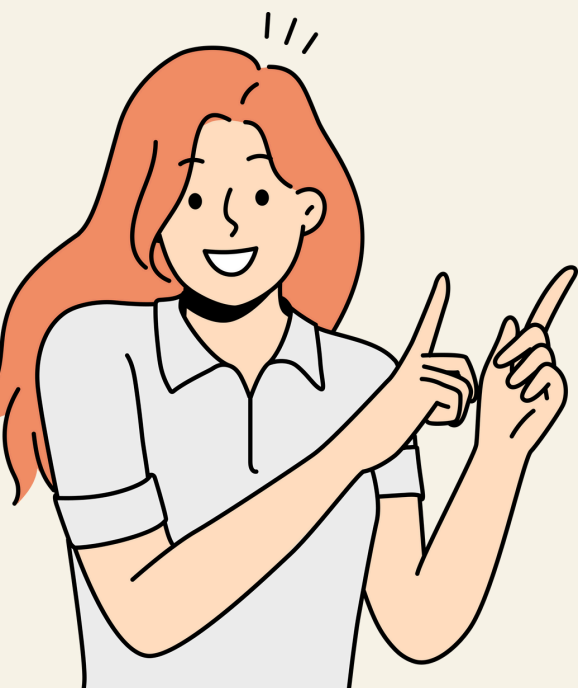


Have Fun in the Sun with GV Hawaii's Academic Youth Programs!

GV Hawaii offers programs where young learners truly have fun while learning English.

Safety is a top priority for our youth programs especially during activities, where the activity leader to student ratio is kept low.

- ✓ Flexible start and end dates to fit your schedule (1 week minimum registration)
- ✓ Wide range of ages (6-17 years old)
- ✓ Fun activities to interact and use English in a natural setting
- ✓ Personalized student support, where everyone is treated like family!



Youth Programs

2 Programs are available

**Cambridge
Young Learners of
English Program
(YLE)**

Recommended Ages:
6-12

OR

**Cambridge
Teen Learners of
English Program
(TLE)**

Recommended Ages:
12-17

12-year-olds may apply for either YLE or TLE

Morning Activities & Afternoon English Lessons

***Activities**



English Lessons



* activities are optional

Cambridge Youth Programs

YLE Program

Recommended ages: 6–12

Program Dates:

Jan 5, 2026 to Feb 13, 2026

Mar 23 to Apr 3, 2026

Jul 6 to Aug 20, 2026

Optional activities:

Mon: 10:00~12:30

Tue-Fri: 9:00~12:30

English lessons only:

Mon-Fri 13:20~16:50

TLE Program

Recommended ages: 12–17

Program Dates:

Jul 6 to Aug 20, 2026

Optional activities:

Mon: 10:00~12:30

Tue-Fri: 9:00~12:30

Sat: 9:00~15:00 (time varies by activities)

English lessons only:

Mon-Fri: 13:20~16:50

Program Schedule

(Tue-Fri)

8:45	Check in
9:00–12:30	Activities
12:30–13:20	Lunch Break
13:20–15:00	Afternoon session①
15:00–15:10	Break
15:10–16:50	Afternoon session②
16:50	Class ends



Options

The following optional services are available:

- Lunch
- Accommodation
- Daily School transportation (Homestay↔School)
- Airport transportation (Airport↔Homestay)
- Cambridge exam (YLE program only)

Please contact GVH for more information



English Lessons

Scheduled English lessons begin at 1:20 pm and end at 4:50 pm Monday through Friday, except holidays.

YLE Program : YLE Program curriculum consists of a fun and engaging learning environment where students perform interactive tasks and do a variety of textbook, video, and speaking activities related to daily themes. YLE students have the option to take a Cambridge Young Learners exam.

TLE Program curriculum focuses on students working interactively on an assortment of activities related to weekly themes. The goal is to communicate with others, and one way students do this is by completing a weekly group project with their peers. This curriculum is aligned with Cambridge A2Key and B1Preliminary tests.



Activities



Optional morning activities allow students to meet and interact with their classmates from all over the world. Students improve their English and learn about Hawaii's unique culture during the activities.

< Activities Schedule >

YLE Program Monday–Friday

TLE Program Monday–Saturday

These activities give students an opportunity to interact in English with their classmates and make friends in a different environment.

What is Cambridge?

– Cambridge is The English Examination Board of the University of Cambridge

Part of the University of Cambridge, Cambridge Assessment English creates English language learning materials and administers English language proficiency exams that are recognized around the world as an accurate measure of English ability. Exams focus on and appeal to learners in different age groups and of different levels or interests. Over 25,000 entities in 130 countries recognize these exams as proof of English language proficiency. Cambridge exam certificates do not expire.

Global Village Hawaii uses Cambridge-aligned materials to teach English in a communicative way. We work to increase students' English conversation skills and confidence by requiring them to talk and interact among their classmates. Because our curriculum is developed around Cambridge textbooks, students can also prepare to take Cambridge exams if they wish.



YLE Program

The Cambridge YLE Program is a mixed level course to develop effective English communication skills. The YLE Program has 3 learning levels: Starters, Movers, and Flyers. Students take a pre-test prior to arrival to determine their level. In addition to YLE classes, students can also sign up for pre-class activities to interact with their classmates in a fun and casual environment before classes. YLE students can improve their English and make new friends from around the world!

TLE Program

The Cambridge TLE program sets weekly themes such as "Having Fun", "How To Spend Money", "Food for Life" and "Family Ties" to work on throughout a week. Students work on a variety of activities related to the weekly theme, from textbook, listening and video exercises, to speaking exchanges with their classmates. Every Friday they carry out a project to show how well they can apply what they have learned during the week. Projects might include group presentations or creating and performing dialogues.



YLE Activity Calendar (sample)

Monday	Tuesday	Wednesday	Thursday	Friday
1 SCAVENGER HUNT 	2 BEACH DAY 	3 SPORTS DAY (FLAG FOOTBALL / TAG) 	4 FOURTH OF JULY NO SCHOOL 	5 KIDS CITY 
8 LEONARD'S BAKERY 	9 SPORTS DAY (FIELD GAMES) 	10 HISTORICAL DOWNTOWN TOUR 	11 BEACH DAY 	12 HAWAIIAN CULTURE DAY 
15 JUNGLE FUN 	16 SPORTS DAY (KICK BALL) 	17 KANEWAI PARK 	18 BEACH DAY 	19 WAIKIKI AQUARIUM 
22 HULA LESSON 	23 SPORTS DAY (DODGE BALL) 	24 HONOLULU ZOO 	25 BEACH DAY 	26 HPD MUSEUM 

TLE Activity Calendar (sample)

Monday	Tuesday	Wednesday	Thursday	Friday	Saturday
1	2	3	4 FOURTH OF JULY NO SCHOOL 	5	6
8 LEONARD'S BAKERY 	9 SPORTS DAY (FIELD GAMES) 	10 HISTORICAL DOWNTOWN TOUR 	11 BEACH DAY 	12 HAWAIIAN CULTURE DAY 	13 PEARL HARBOR TOUR  Start at 10:00am Return at 4:45pm
15 TLE SCAVENGER HUNT 	16 SPORTS DAY (KICK BALL) 	17 UNIVERSITY OF HAWAII TOUR 	18 BEACH DAY 	19 WAIKIKI AQUARIUM 	20 SURFING LESSON  Start at 9:30am Return at 3:30pm
22 HULA LESSON 	23 SPORTS DAY (DODGE BALL) 	24 HONOLULU ZOO 	25 BEACH DAY 	26 HPD MUSEUM 	27 SEA LIFE PARK  Start at 8:30AM Return at 5:00PM

※Activities and schedules may change due to weather and other unforeseeable conditions.



GLOBAL VILLAGE HAWAII

School location

Global Village Hawaii is conveniently located on the 11th floor of a modern business building (Pacific Guardian Tower) which is close to Ala Moana Shopping Center, Walmart & Target stores, bus terminals, and Ala Moana Beach Park. The school has classrooms with spectacular views of the ocean and a beautiful student lounge.



**1440 Kapiolani Boulevard, Suite 1100
Honolulu, HI 96814 USA**

Tel: +1 808 943 6800

Email: hawaii@gvhawaii.com

Follow us on social media !



Global Village Hawaii



@gvhawaii (English)

@gvhawaii_jp (Japanese)



@gvhawaii

**GV Hawaii official website
www.gvhawaii.com**



scan the QR code for more information