

GLOBAL VILLAGE

HAWAII

SEAVIEW DORMITORY

2252 Seaview Avenue, Honolulu HI 96822

Updated on 11/16/2022

Seaview Dormitory is "Share-House" type of dormitory. Just 20 minutes by bus to Global Village Hawaii. It is located near the University of Hawaii at Manoa with easy access to Waikiki. The room has a desk, chair and bed. Two shared bathrooms per floor and shared kitchens are located on the first floor. A stove, an oven, utensils, pots, pans, a microwave, and a toaster are available to use in the kitchens. All residents are required to clean up after themselves after using the kitchen. Not only GV students but also other school students and working people live in the dorm.

Directions to GV Hawaii:

Students can catch Bus #A, #6, or #18 to school.

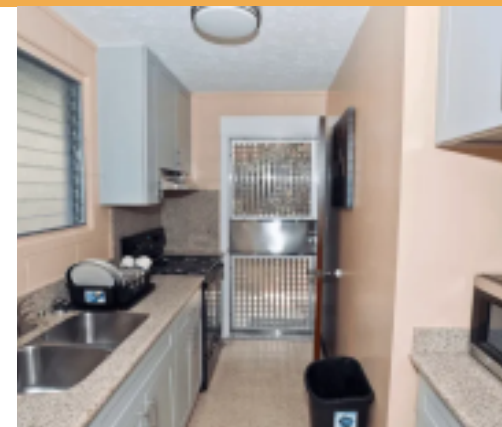
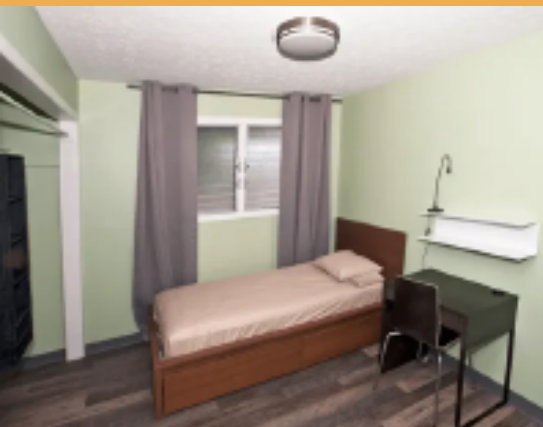
Amenities:

- * Kitchen appliances and utensils
- * Bed linens
- * Wifi
- * Coin-operated washer and dryer
- * Bathroom
- * Air Conditioning



DISTANCE TO GV HAWAII

BUS:	BIKE:	WALK:
20	15	35
minutes	minutes	minutes



Global Village Hawaii:
1440 Kapiolani Blvd #1100 Honolulu, HI 96814 United States
TEL: +1 808-943-6800 FAX: +1 808.943.6400 URL:www.gvenglish-hawaii.com

